



General Presentation

Aubrilam : 1978 - 2011

Factory in Brioude, France

1978



Aubrilam : 1978 - 2011

Factory in Brioude, France

2011



Aubrilam : 1978 – 2011

1. Activities

Production site:

220m length factory on a 20.000m² field in Brioude, France

Headquater:

Clermont Ferrand, France

Turnover:

15.000.000 € in 2010

Workforce:

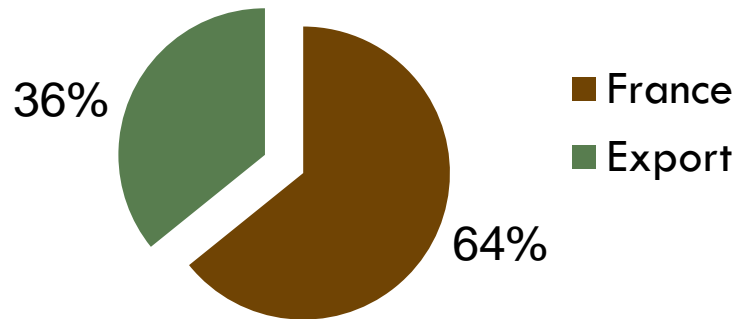
35 people for the production

35 people in the headquater and sales offices (Paris, Lyon,
Düsseldorf)

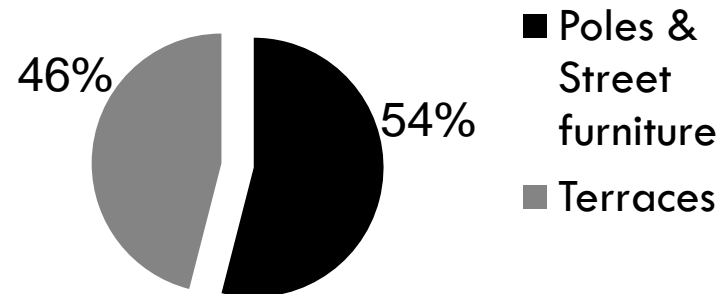
Aubrilam : 1978 – 2011

2. Turnover 2009

Geographical distribution of turnover



Turnover distribution 2009





Aubrilam : Know-How

1. Raw Material: Scot pine heartwood
2. Manufacturing process
3. Design
4. Glued laminated timber
5. Resistance Tests
6. Validation with life size-test
7. Norms and Calculations
8. Colour

Aubrilam : Know-How

1. Raw material: Scot pine heartwood

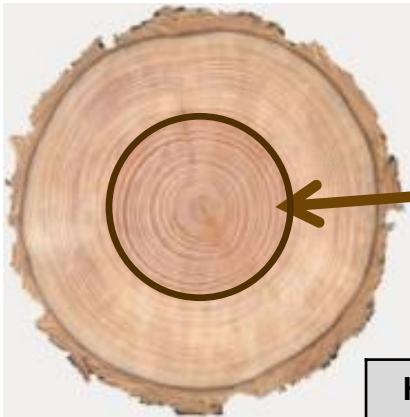


- Comes from FSC* or PEFC** certified forests in Scandinavia  
- It grows relatively slowly, produces wood with fine and very even tree rings.
- Naturally class 3
- Does not require any further chemical treatment

Aubrilam : Know-How

2. Manufacturing process

Use of untreated wood

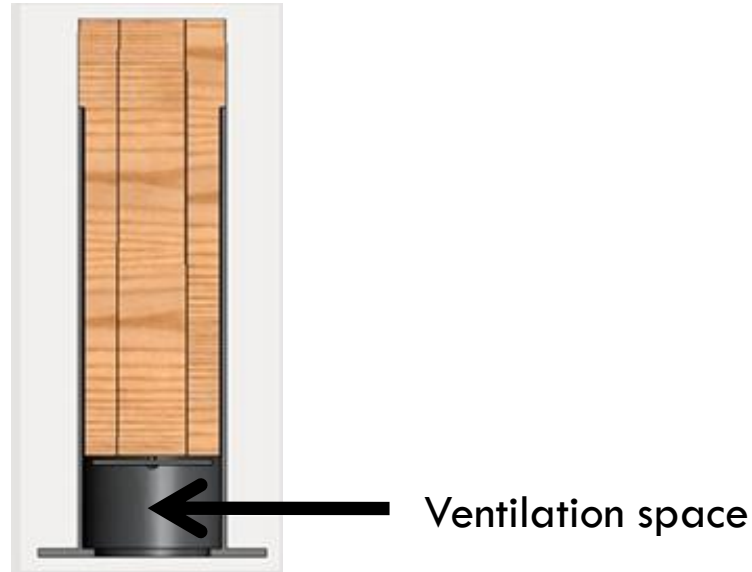


Scot pine heartwood is naturally class 3:
It does not require any further chemical
treatment.

| Hazard class | Environment |
|--------------|--|
| 1 | Above ground (dry). |
| 2 | Above ground (risk of wetting, protected from the weather). |
| 3 | Above ground (exposed to wetting, but not in ground contact). |
| 4 | Timbers in contact with the ground or fresh water. |
| 5 | Timbers in the marine environment. |

Aubrilam : Know-How

3. Design



Ventilation space in the bases of the columns:

Avoids contact to the ground

Protects wood against fungi and wood boring insects

Aubrilam : Know-How

4. Glued laminated timber



Increase in the strength of columns

Reduction of wood dimensional changes

Glue guaranteed for outdoor use

Wood certified GLULAM ACERBOIS*



Humidity \leq 12%

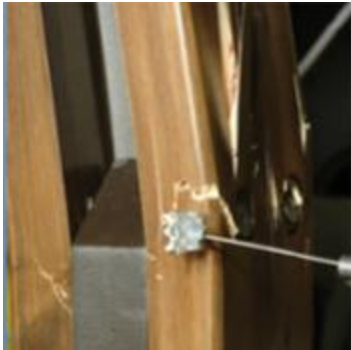
Quality control at reception of the beams :

- beams dimensions and strips thickness
- width of the glue joints
- knots
- cracks



Aubrilam : Know-How

5. Resitance Test



« Life Size » tests permanently done by:

Polytech'Clermont – Civil Engineering department of the Blaise Pascal University, center of competence recognized in France and in Europe.

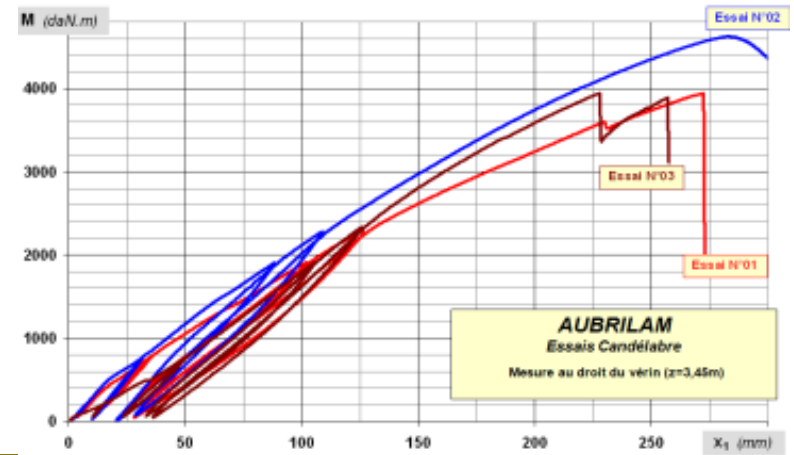


Objectives :

- Validate the mechanical stability
- Ensure the reliability in use
- Optimize the products

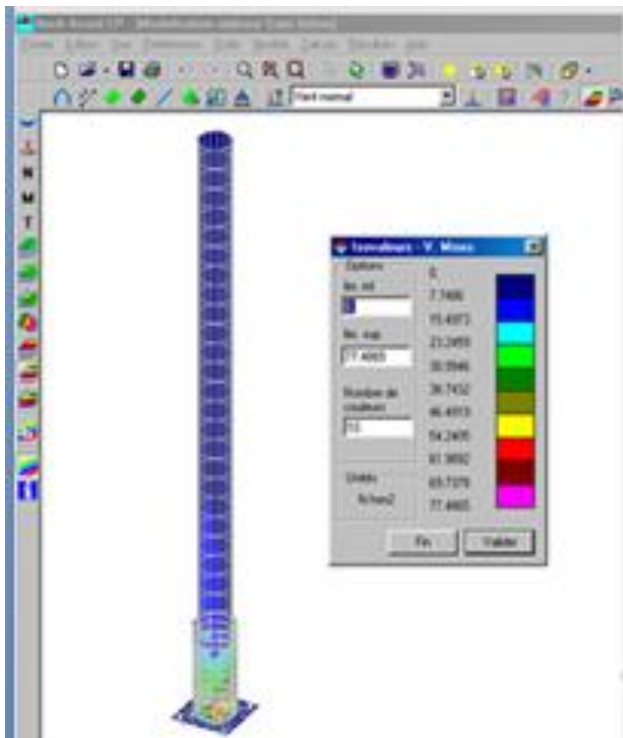
Aubrilam : Know-How

6. Validation with life size-test



Aubrilam : Know-How

7. Norms and calculations



To guarantee the performance of its mixed wood lighting columns, Aubrilam extends the framework given in the EN 40 norms by using particularly:

structural **Eurocodes** :

- EN 1990
- EN 1991-1-4 wind
- EN1992-1-1 concrete
- EN 1993 steel
- EN 1995-1-1 wood

Aubrilam : Know-How

7. Norms and calculations

CE Marking:

- Aubrilam, first European timber-based column manufacturer to obtain CE Marking
- Demonstrates that our products conform to all the standards used by countries within the European Community
- provides clients with irrefutable proof of the quality of Aubrilam products with regard to essential requirements (safety, public health, environment, etc.) set out in the Construction Products directive
- certification confirms the durability of our timber-based columns
- It is based on an evaluation of our performance in the areas of design and manufacturing processes.
- CE Marking insists on a high degree of quality.

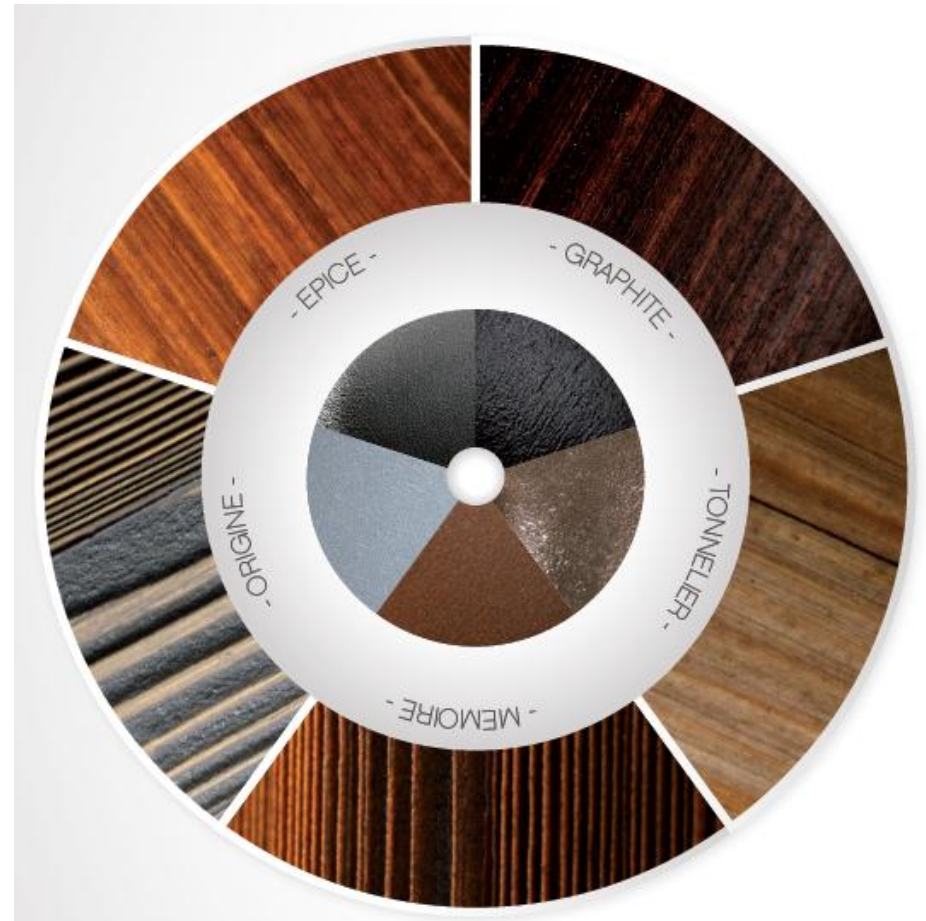


Aubrilam : Know-How

8. Colour

3 coats of microporous coating :

- 1 for impregnation
- 2 for the protection of UV rays and pollution.

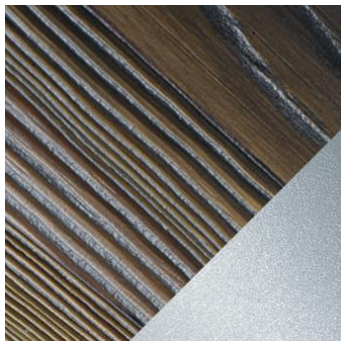


Aubrilam : Know-How

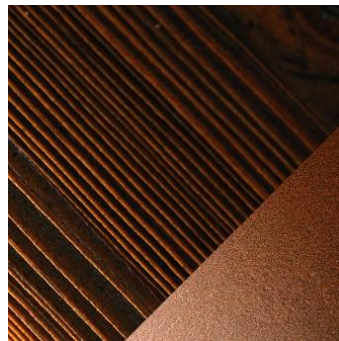
8. Colour

3 coats of microporous coating :

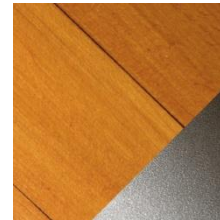
- 1 for impregnation
- 2 for the protection of UV rays and pollution.



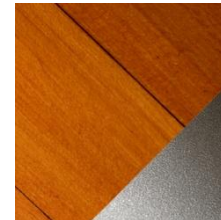
origine



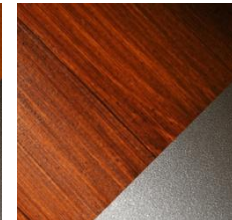
mémoire



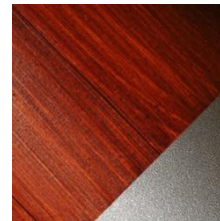
Light oak



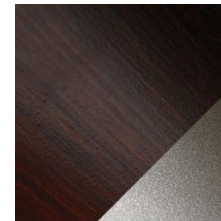
Dark oak



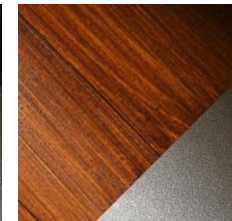
Chestnut



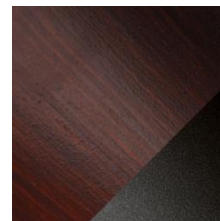
Mahogany



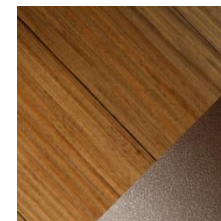
Ebony



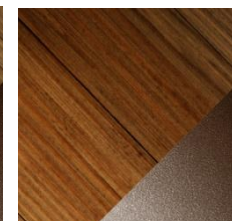
épice



graphite



tonnelier



brume